



Gravity & Reinforced Very High  
& Steep Retaining Wall, Turkey



The Selenyum is a luxury residential, commercial and office complex built on a steep hillside



# THE CHALLENGE

Road and car park to be created on top of  
15m unstable slope – needed high retaining wall



# Conventional Approach

Concrete retaining walls ->

Expensive X

Cracking X

Don't meet earthquake codes X

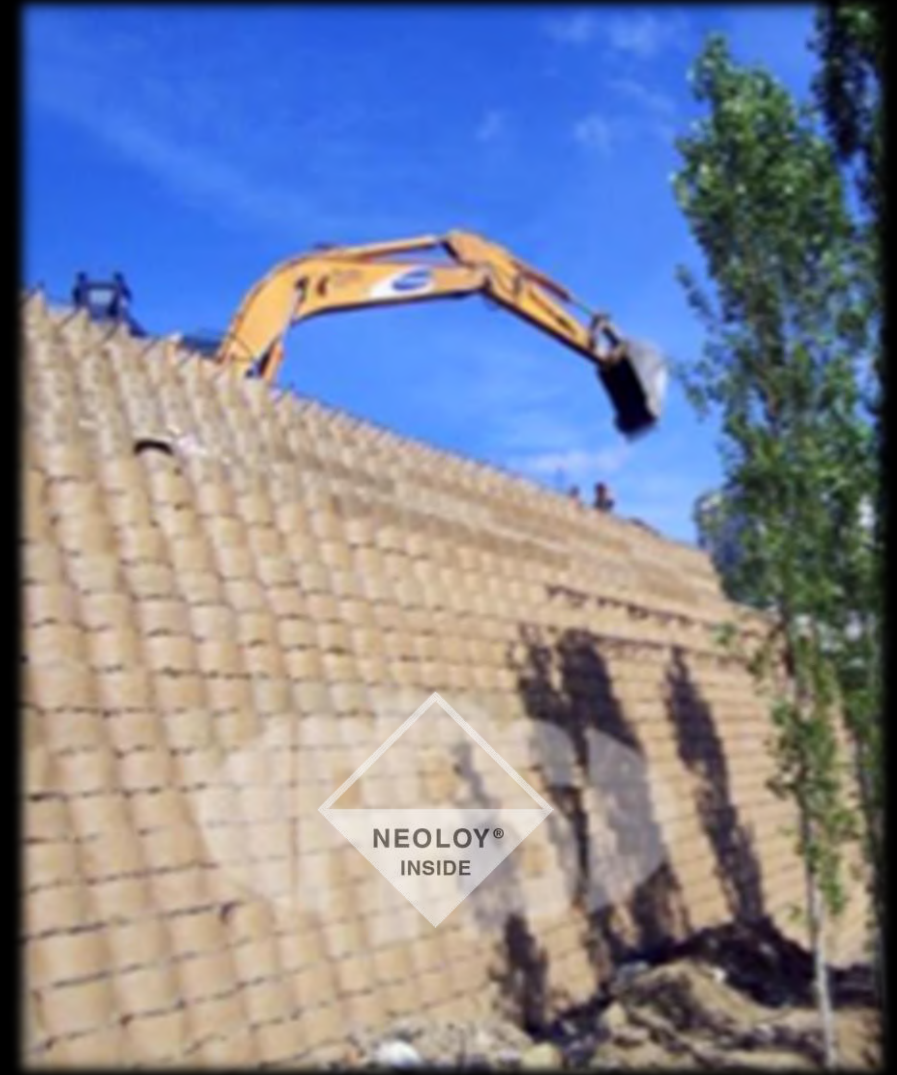
Segmental retaining walls ->

Complicated X



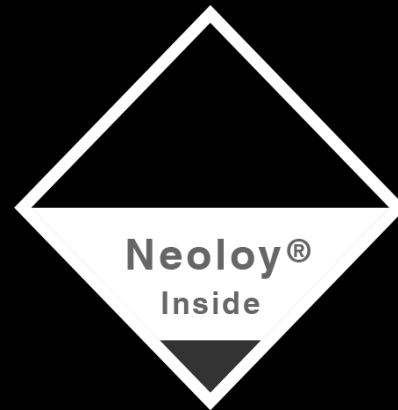
## PRS Solution

- Simple logistics ✓
- Fast installation ✓
- Excellent drainage ✓
- Use of local material for infill ✓
- Seismic resistant – complies with codes ✓

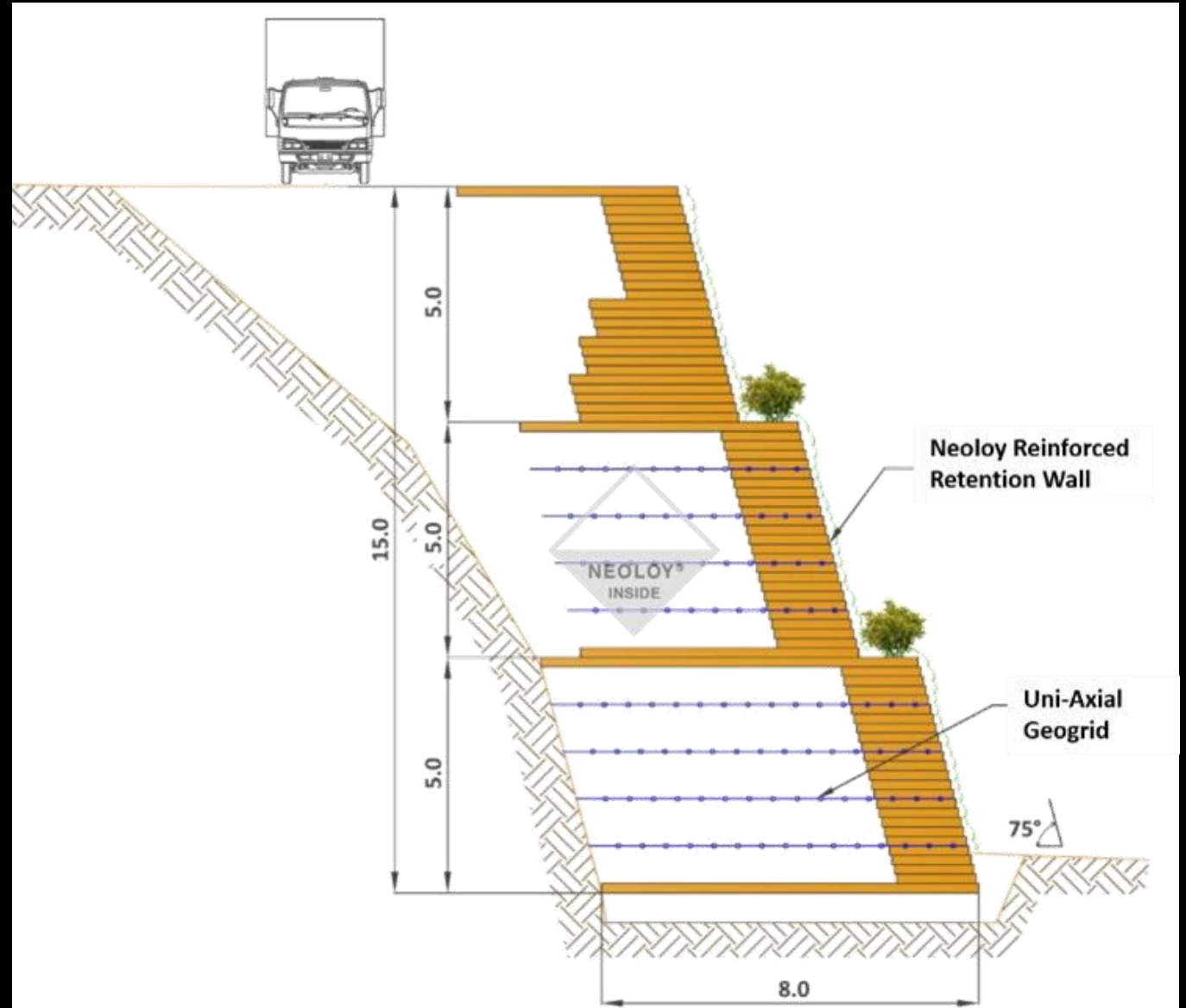


A unique design of 3 x 5m terraced walls built on slope of 75°.

PRS-Neoloy® Tough-Cells  
Provide  
Better Performance at Lower Costs



# PRS-Neoloy® Tough-Cells Design:



# THE RESULTS



## PRS-Neoloy® provided:

- Global stability for 15m height and loads
- Flexible solution withstands earth movements – meets local earthquake design codes
- Long-term lifespan



**90%.**

**Used local infill**

---

**50%.**

**Smaller base**

---

**0.4g**

**High seismic resistance**

---





# PRS Neoloy® Tough-Cells – Engineered for Success

